



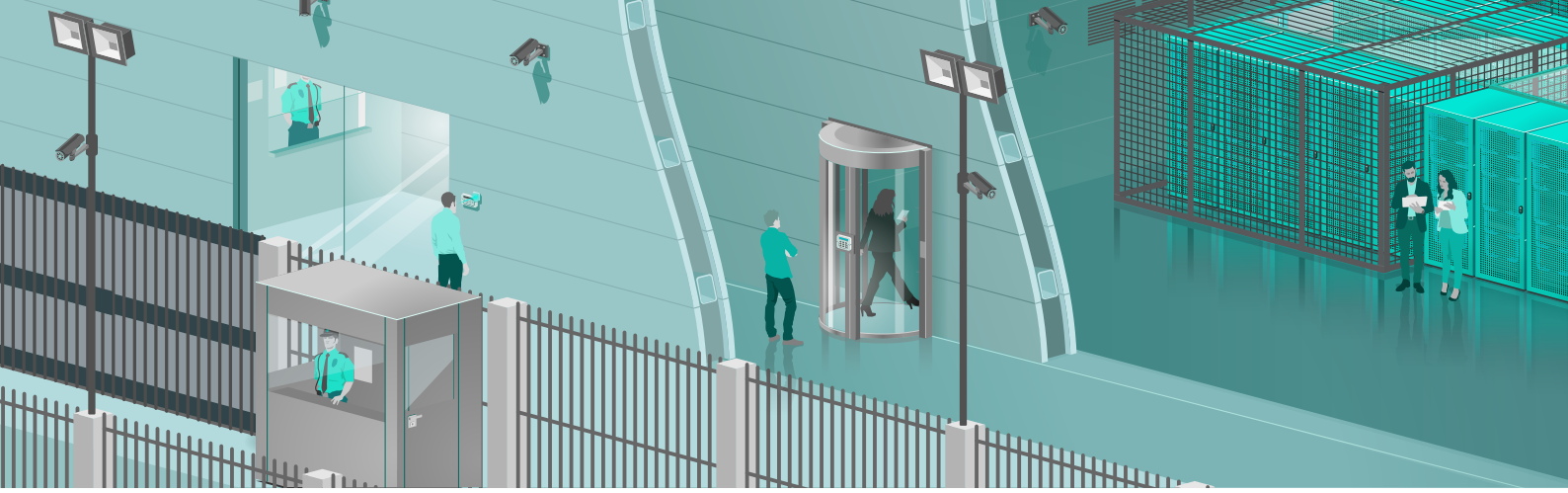
# Smarter Security

the Colt DCS approach to the physical protection of your data



Taking a proactive and smarter approach to data centre security is of the utmost importance to Colt Data Centre Services.

Physical security is high on the agenda of our customers. However, it's increasingly costly to implement, and the value of it can be hard to quantify. To demonstrate value and address customer needs, Colt DCS has taken a smart, multi-pronged approach to security that can be tailored.



**In today's rapidly evolving data centre environment, there is a need to deliver effective security measures that are accurately targeted and appropriate to the identified risks to ensure we create a secure environment to protect data without unnecessarily hindering the day-to-day operations of the site. It's not hard to build "Fort Knox" using a "just-in-case" mindset, but it is expensive and, in most cases, unnecessary.**

### A 'smart' approach is the way to go

At Colt DCS, that means a structured approach to physical security planning based on the well-founded security methodologies of Defence in Depth, Secured by Design and Crime Prevention through Environmental Design.

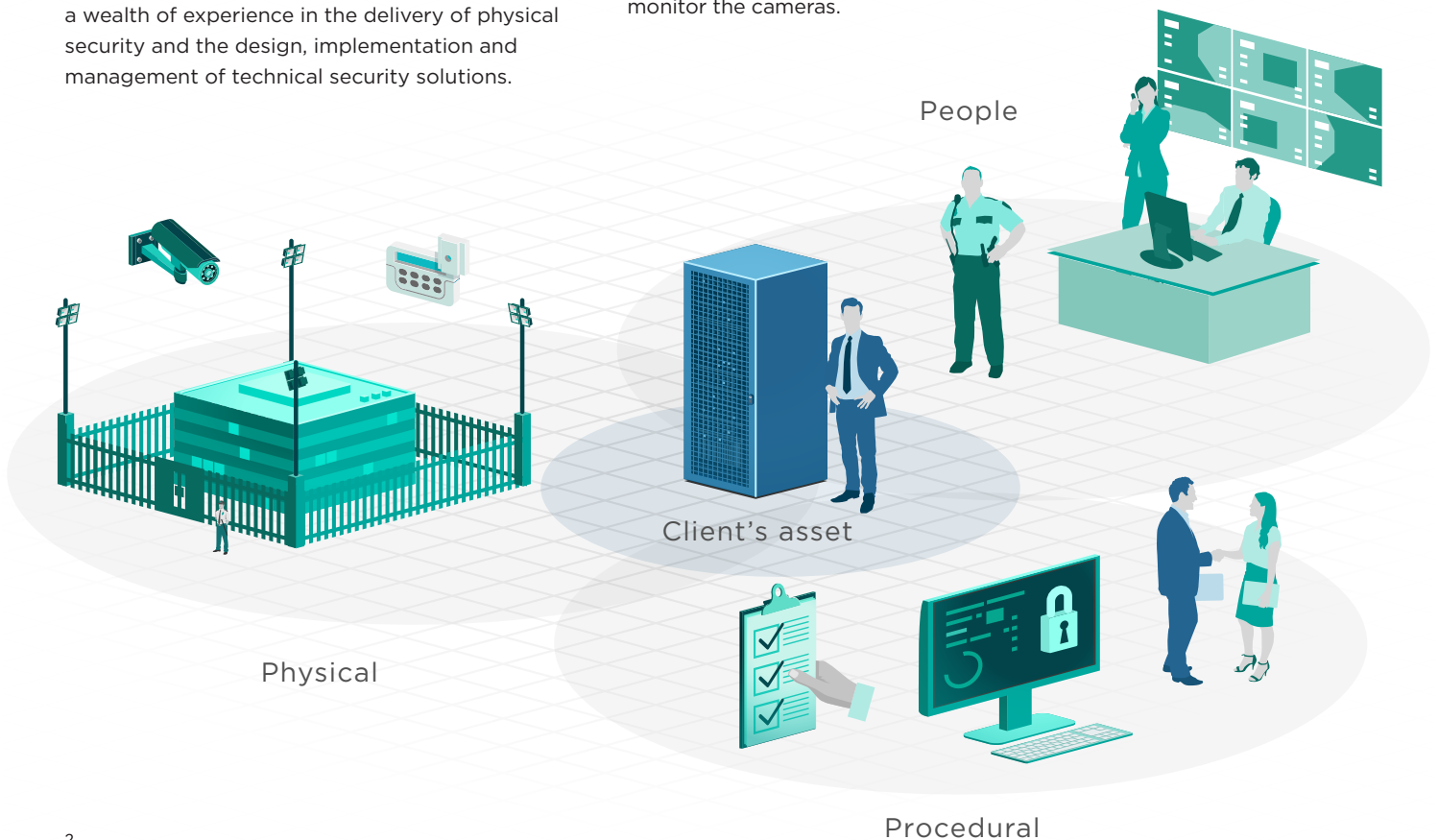
We identify the risks, apply physical controls, and implement appropriate surveillance technology to support those physical measures. We have a specialist in-house security operations team with a wealth of experience in the delivery of physical security and the design, implementation and management of technical security solutions.

The core element of our strategy is our understanding that by creating a secure and well-controlled environment, we do not need to apply the same active monitoring surveillance tactics that are necessary in public space but are often used unnecessarily in private space.

Like others, Colt DCS deploys physical barriers supported by alarm, access control and surveillance systems to secure and monitor our sites.

Automated, reactive monitoring is the preferred approach as Colt DCS targets cameras on select areas, which makes for a less labour-intensive approach.

Colt DCS uses cameras selectively for a couple of reasons. First, the recorded footage produced by the many companies that have a high reliance on CCTV surveillance is of limited utility. The footage requires protection and a high degree of management given the increasing controls on personal data. Second, it's a security measure that's only as reliable as the person tasked to monitor the cameras.





There is no doubt that active monitoring of CCTV images has its place in public or uncontrolled environments where the task is to spot the bad.

Unfortunately, the general perception of CCTV, fuelled by Hollywood dramas, is that hundreds of cameras and monstrous video walls are an ideal way to monitor the company premises. In fact, it can create a false sense of security.

At Colt DCS sites, environments are highly controlled, which means smart technology is employed with highly effective, cost-efficient security management in mind. Furthermore, Colt DCS takes a structured approach to security design, with security layers that incorporate delay, detect and detain elements. For example, an attempt to

gain access to the premises can be delayed for long enough so the attack can be detected to ensure detention of the perpetrator and neutralisation of the threat. Security measures, such as a physical barrier or a detection system, deployed have clearly-defined purposes and performance requirements. That way, we ensure elements are appropriate; not underspecified (creating a risk) or overspecified (adding unnecessary expense).

Having placed the appropriate physical barriers between the potential attacker and the protected assets, we determine a suitable detection system to notify the security team of attempts to overcome it.

An example of an attempt is a physical attack on the barrier or an attempt to misuse an electronic access system. In such cases, verification means need to be applied. In lower-risk areas, this could be a second detection system of a different type. In the majority of cases, where the risk is higher, CCTV images presented immediately to a security guard are the recourse.

The onsite security guards can see the alarms on a single console of an advanced management system; automatic generation of live video feeds alongside recorded images of the period leading up to the alarm allow guards to determine necessary actions. Moreover, the incidents and the responses of the guards are logged electronically.

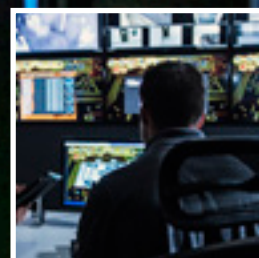
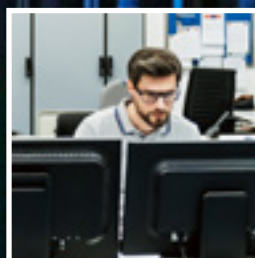
The guards are also able to safely carry out other tasks that may take their attention away from the system as it will alert them if and when action is required.

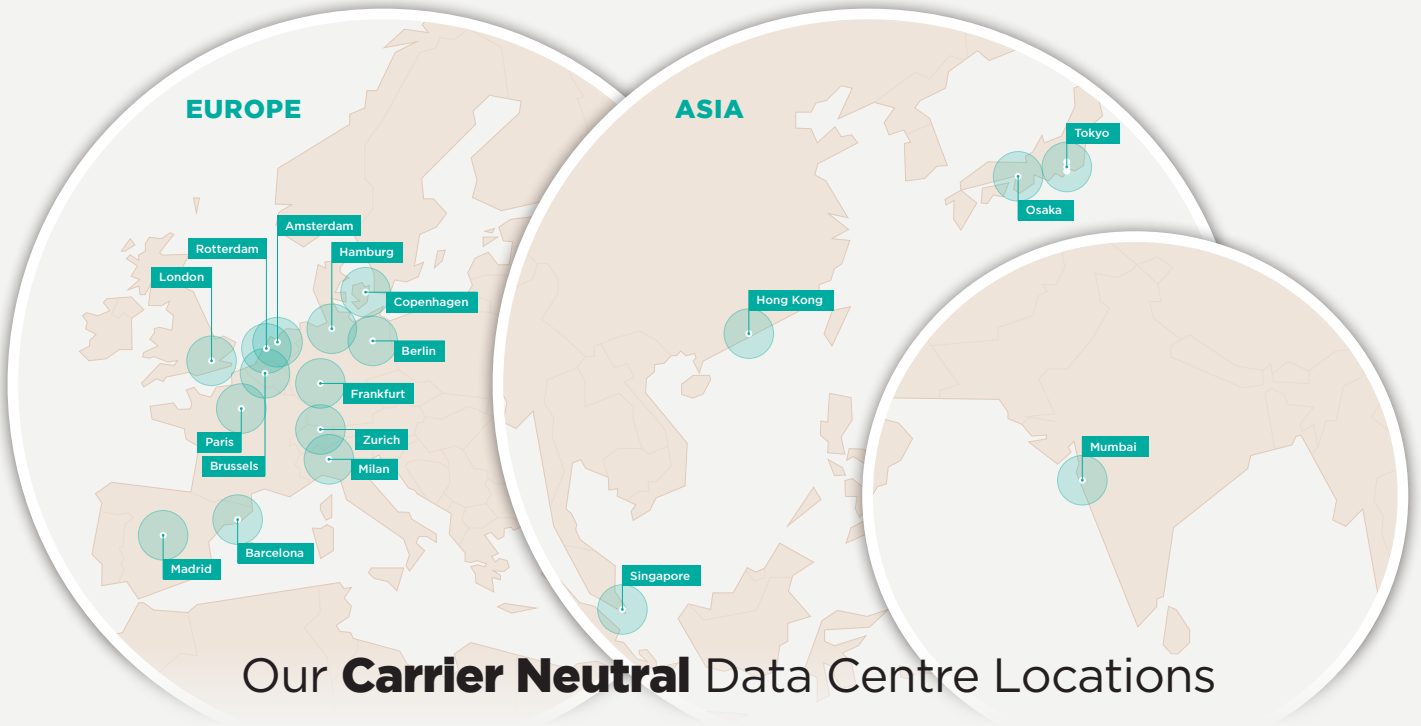
Whilst we retain the ability to manually control and monitor cameras and monitor access control activity and carry out regular patrols of our sites, we're safe in the knowledge that our security systems are designed to target risk. The systems are also smart enough to tell us when something is wrong. Security guards are still necessary though. Colt DCS doesn't believe guards or cameras should be replaced; they're vital strategic elements.

However, Colt DCS uses valuable tools at its sites to ensure the guards have the information necessary to react appropriately to security incidents.

Our customers benefit as we have control over site activities, we protect the different areas of the site on a prioritised and risk-managed basis, ensuring critical assets are the highest priority, cost-effectively. Through automation, we remove the risk of human error and through the strict application of the operational requirements process we target systems as needed at minimal cost. Colt DCS takes a flexible approach to security though; we adapt to customer needs.

Our in-house security operations team are there to provide customers with the necessary specialist advice and information.





## Our **Carrier Neutral** Data Centre Locations

### Belgium

Colt Brussels Data Centre

### Denmark

Colt Copenhagen Data Centre

### France

Colt Paris North Data Centre  
Colt Paris South West Data Centre

### Germany

Colt Berlin Data Centre  
Colt Frankfurt City Data Centre  
Colt Frankfurt West Data Centre  
Colt Hamburg Data Centre

### Hong Kong

Colt Hong Kong Data Centre

### India

Colt Mumbai Data Centre

### Italy

Colt Milan Data Centre

### Japan

Colt Osaka Data Centre  
Colt Tokyo Shiohama Data Centre  
Colt Tokyo Inzai Data Centre  
Colt Tokyo Inzai Data Centre Two  
Colt Tokyo Otemachi Data Centre

### Netherlands

Colt Amsterdam South East Data Centre  
Colt Rotterdam Data Centre

### Singapore

Colt Singapore Data Centre

### Spain

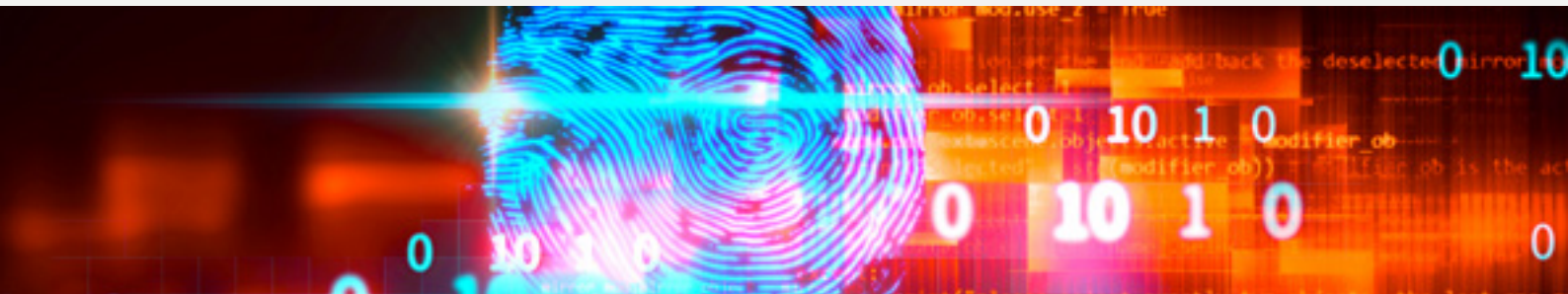
Colt Barcelona Data Centre  
Colt Madrid Data Centre

### Switzerland

Colt Zurich Data Centre

### United Kingdom

Colt London City Data Centre  
Colt London West Data Centre  
Colt London North Data Centre



0800 358 3598



dcsinfo@colt.net



www.coltdcs.com



Colt Data Centre Services



@ColtDataCentres



Colt Data Centre Services



In today's world, great businesses must be secure, resilient, scalable and above all - connected.

At Colt Data Centre Services this is our business. Colt Data Centre Services offers flexible and affordable colocation and IT infrastructure solutions. Our connectivity and colocation solutions allow our customers freedom to plan effectively for the growth of their business, knowing that their data centre strategy is future-proof.

We operate 24 state-of-the-art data centres across Europe and Asia Pacific, offering 24/7 security and local language support. We are connected to a further 530+ third party data centres across our network and are able to offer private links into the major public cloud providers.

As the only data centre provider in the world to secure the highest M&O certification by the Uptime Institute, our operational standards are recognised as industry-leading.

Colt Data Centre Services has over 20 years' experience in designing, building and operating energy-efficient, reliable data centres - hosting significant financial, media, corporate and cloud wholesale providers across the world.

© 2019 Copyright Colt Technology Services. The Colt name and logos are trade marks. All rights reserved. Ref: 2019-10-14-WP-SMARTER-SECURITY-EN

### Accreditations

ISO 27001  
ISO 14001

**colt**  
Data Centre Services